



**HOCKEY ALBERTA
OFFICIATING
PROGRAM**

**2019-2020 INFORMATION PACKAGE
NORTH CENTRAL REGION**
Website: officials.hockeyalberta.ca



For all your North Central Region news:
officials.hockeyalberta.ca/officials-regions/north-central-region/





NORTH CENTRAL REGION

COMMITTEE MEMBERS

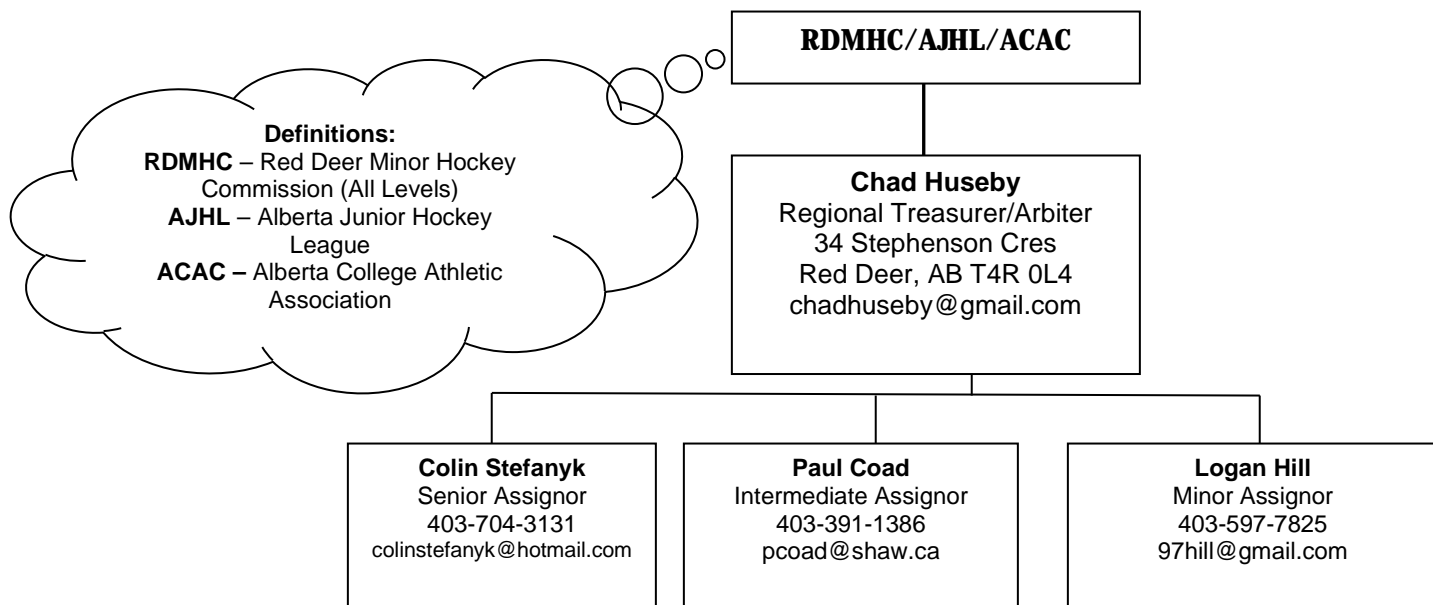
Regional Coordinator	Cody Huseby	403-896-2122 officialsnorthcentralregion@hockeyalberta.ca
Vice Chair/Discipline	Jared Greenberg	403-848-2444 ncdiscipline@hockeyalberta.ca
Treasurer	Chad Huseby	403-396-4259 ncfinance@hockeyalberta.ca
Secretary	Andy Odenbach	403-885-4196 ncsecretary@hockeyalberta.ca
Director – Male Development	Brent Ramsay	403-506-8065 ncmaleddevelopment@hockeyalberta.ca
Match Penalty Coordinator	Jason Nedinis	403-831-0275 officialsmatchsouth@hockeyalberta.ca
Supervision Coordinator	David Westwood	403-872-4348 ncsupervisions@hockeyalberta.ca
Mentorship Coordinator	Logan Hill	403-597-7825 ncmentorship@hockeyalberta.ca
Clinic Coordinator	Liam Maclsaac	587-877-4711 ncclinics@hockeyalberta.ca
Communications Coordinator	Curtis Johanson	403-877-5520 nccommunications@hockeyalberta.ca

***A list of area reps can be found on the North Central Region page at
officials.hockeyalberta.ca
under the Rural Centres – RICs tab.**



NORTH CENTRAL REGION

RED DEER/SENIOR ASSIGNOR TREASURY TREE



Definitions:
RDMHC – Red Deer Minor Hockey Commission (All Levels)
AJHL – Alberta Junior Hockey League
ACAC – Alberta College Athletic Association

Duties

- Chad Huseby:** pays officials for RDMHC/ Junior A (AJHL)/ ACAC, Senior Female, Arbiter assigning program questions & answers
- Logan Hill:** assigns RDMHC Novice & Atom B, Peewee B, Bantam B, Minor Female
- Paul Coad:** assigns RDMHC Bantam & Midget A/AA, Peewee A/AA, Atom AA/A, Junior Female, Senior A Female
- Colin Stefanyk:** assigns Senior AAA, Senior AA, Junior A (linesmen), Junior B, ACAC Male/Female, Midget AAA Male/Female, Midget AAA (minor) and Bantam AAA

All questions regarding payment of officials within RDMH and NC Senior program should be directed to Chad Huseby and not to the above assignors.

Officials doing games in other communities please contact the local RIC with any questions or issues. You can find a list of the local RICs on our website for communities outside of Red Deer.



NORTH CENTRAL REGION

DRESS, CONDUCT AND DISCIPLINE

Dress Code

The intent of the dress code is so that people observing officials entering and leaving arenas are left with a favorable impression. Senior officials are to set a good example for young officials.

AJHL, CIS, ACAC

- Shirt and tie, suit coat and or sweater, dress pants and dress shoes
- Must be at Arena 60 minutes prior to game time
- No baseball caps

Senior, Jr B, Midget AAA & Bantam AAA

- Shirt and sport coat and/or sweater, dress pants and dress shoes
- Must be at Arena 45 minutes prior to game
- No baseball caps

Minor Hockey (excluding AAA)

- Clean dress pants and/or jeans
- Must be at arena 30 minutes prior to game

Winter boots are acceptable in extreme conditions.

Officials not adhering to these guidelines will be fined 35% of game fee. It is an expectation that officials be clean shaven or that hair and facial hair be well groomed.

Discipline Code

Missed assignments

- 1 game – fine equivalent to the game fee
- 2 games – fine equivalent to the game fee + two-week suspension
- 3 games – fine equivalent to the game fee + three-week suspension
- 4 games – fine equivalent to the game fee + four-week suspension
- 5 games – fine equivalent to the game fee + year suspension

NSF Cheque: \$25 collection fee

Ice Conduct: Swearing, liquor, and obscene gesture(s) – automatic suspension

Fines: All fines will be deducted from game fees and forwarded to Referee Fund

Suspensions: Will begin after last assigned game

Game Fees: Must not exceed Hockey Alberta Provincial Rates

Unsanctioned Hockey: No insurance covered and do not wear your Hockey Alberta Crest

The Conduct Management (Discipline) Committee has the final decision on suspensions and fines.
All members have the right to appeal.



NORTH CENTRAL REGION

OFFICIALS ROLE

The basic role of the official can be broken down into two simple words --"safe" and "fair". By viewing and officiating the game with these two words in mind, an official should be able to call a game that is acceptable to all participants. There is no good excuse for an official not to penalize any infraction that threatens the safety of another participant and Hockey Canada calls upon all officials to strictly enforce these types of infractions.

The word "fair" does allow some flexibility in determining which infractions will and will not be penalized. Any infraction that takes away a good scoring chance should be penalized. However, some infractions although obvious infractions by the wording in the rule book, can be overlooked if no advantage is gained. Remember that it is the "spirit" or "intent" of the rule that determines an infraction, not the literal wording. This will be interpreted differently in each game, depending on the official, the level of play and the style of play. As officials develop their officiating skills, their "feel for the game" and "judgment" will help them determine the officiating style needed in each game.

Infractions after the whistle should also be penalized accordingly, with emphasis placed on penalizing the instigator of such activity.

Code of Ethics

The Hockey Canada officiating program "Officials Code of Ethics" provides guidance to registered officials across Canada. The Hockey Canada Branches and their members should expect from Hockey Canada Officiating Program officials the highest possible standards of personal integrity, competence, judgment, and discretion. Developed by the former Hockey Canada Referees Committee, the Officials Code of Ethics is its public declaration of an official's obligation to himself, his peers, and the game.

I will...

- Do the best job I can in each game, no matter what the category of hockey.
- Always show respect for my fellow officials, the players, coaches and fans.
- Treat all other participants and spectators of the game with respect at all times. Use of abusive language or gestures (reverse abuse) is completely unacceptable under any circumstances.
- Study and continue to improve my knowledge of the Canadian Hockey playing rules, the Canadian Hockey Officiating Program policies and procedures.
- Represent myself and the rules of the game as fairly and as accurately as possible at all times.
- When required, I will promptly report all penalties involving potential disciplinary action to the appropriate authorities.
- Always be unquestionably impartial, keeping a professional and appropriate distance from teams.
- Understand that the use of alcohol is not encouraged and is totally unacceptable on game days. The use of illicit drugs is against the law.
- Uphold the philosophy and right of all hockey participants to "Fair Play" and penalize accordingly all violent acts.
- Raise the standard of play in each game that I officiate.
- Be supportive of my fellow on-ice and off-ice officials at all times, even when I am a spectator.
- Accept the fact that I will make mistakes, but I will not get frustrated or let this learning process affect my performance or my professionalism.
- Contribute to the continuing growth of the Canadian Hockey Officiating Program and its officials within my Branch through support, encouragement and positive attitude.
- Respect and accept constructive feedback from supervisors and the assignments I receive from my administrators.



MATCH PENALTY ON OFFICIAL

THIS PENALTY IS THE MOST SEVERE PENALTY IN THE RULE BOOK. The following is a list of procedures and guidelines you should follow when making this judgment.

PROCEDURE

1. Keep only the top copy of the Game Sheet and Write-Up Sheet.
 2. Ensure that you have the following information:
 - a. Correct NUMBER of the player or NAME of the coach - if you do not know, ask. Be sure you know BEFORE you leave the arena.
 - b. Make sure the proper number and offence is clearly printed (legibly) on the Game Sheet.
 - c. Ensure that the Game Sheet has been properly completed.
 - d. Player's Name
 - i. Player's or Team Official's Team
 - ii. Time and Period Assessed
 - iii. Full Description - include all possible factors that led to the incident (state facts, NOT opinions).
 - iv. Detail the degree of violence in the infraction, the extent of the injury to yourself, if any, and also what happened after the incident - did he leave without taking further action?
 - e. After you are satisfied all details of the incident have been reported, make sure your name and referee's phone number appear legibly on the report.
 - f. **PHONE WITHIN 12 HOURS OF THE INCIDENT FOR NORTH CENTRAL, CENTRAL AND SOUTH REGIONS**
Jason Nedinis
403-831-0275
officialsmatchsouth@hockeyalberta.ca
- Be prepared to supply the following information:
- i. Your name.
 - ii. Phone number.
 - iii. Names and phone numbers of fellow officials.
 - iv. The time, location and league of the game.
 - v. The teams involved.
 - vi. Player's or team official's name and team.
 - vii. Rule number incident applies to.
3. I will then follow up with you to advise what we will do or how we will proceed from here.

GUIDELINES

Sometimes, the rules are inappropriately used to call a Match Penalty. Please consider the following:

1. Rule 9.2 Verbal abuse is unacceptable behavior, but it is NOT a Match.
2. Rule 6.1 If the player attempted to injure you, please ask yourself whether it would have been effectively covered under Rule 9.6
3. Rule 9.6 a Any player or team official who threatens or attempts to strike a Referee, Linesman or any Off-ice Official before, during or after a game shall be assessed a Match penalty and shall be reported to the President by the Referee.
4. Rule 9.6 b Any player or team official who intentionally touches, holds or pushes a Referee, Linesman or Off-ice Official before, during or after a game shall be assessed a Match penalty and shall be reported to the President by the Referee.
5. Rule 9.6 c Any player or team official who deliberately strikes, trips or body checks a Referee, Linesman or Off-ice Official before, during or after a game shall be assessed a Match penalty and shall be reported to the President by the Referee. Such player or team official may be suspended for one year or more.
6. Rule 9.7 Ensure this was not an accident but was done on purpose. Report only those incidents where an official is involved, NOT player on player.



MATCH PENALTY ON OFFICIAL REPORT FORM

OFFICIALS REGION:

REFEREE NAME:

ADDRESS:

CITY:

LEVEL:

PH:

PC:

AGE:

EMAIL:

LINESMAN:

LINESMAN:

PH:

PH:

INFRACTION:

DATE OF INFRACTION:

NAME OF INDIVIDUAL:

INDIVIDUAL'S TEAM:

TIME OF INCIDENT:

CATEGORY:

PERIOD:

OCCURRED ON OFFICIAL:

LOCATION:

SWEATER NUMBER:

OPPOSING TEAM:

SCORE:

GAME TYPE:

REFEREE ASSIGNOR:

PH:

In completing your report please include as much of the following as possible:

1. What led up to the incident?
2. Give approximate distances, (i.e. along the boards, approximately 10 feet from blue line).
3. Use terms to describe the degree of violence, (i.e. vicious two-handed slash).
4. Result of infraction, i.e. cut to the eye area.
5. State facts and what you saw only.
6. Reaction of all participants after the infraction.
7. When the player was ejected did he cause further problems.

SIGNATURE OF OFFICIAL:

Date:



NORTH CENTRAL REGION

INCIDENT REPORT WRITING

There is a concern this season over the quality of reports written by officials. This is not a local problem, but it is happening throughout the branch. The following penalties must always be followed up with a written report:

- **All Game Misconduct Penalties**
- **All Gross Misconduct Penalties**
- **All Match Penalties (Match penalties on officials are reported separately)**
- **All Misconduct Penalties occurring within 10 minutes of the conclusion of the game.**

In your report the following must be included:

- Name, number, time of infraction, and team of offender – if it is a coach and you do not know his name, ask one of the assistants, or someone from the other team.
- Check the front of the game sheet to be certain the timekeeper recorded the penalty properly – if it isn't listed on the front, you can add it with the time recorded that it happened and initial this.
- The rule number of the infraction.
- Report if anything happened during the game that led up to the incident or if anything happened afterwards.
- Report only the facts of the actual occurrence describing exactly what you saw happen and where you were in relation to the incident.
 - Was the incident accidental or was it intentional
 - If profane language was used, you can state “abuse with profanity” or “the player shouted profanities at an opposing player”
 - Rule 9.2 will need the actual verbal taunt that was used
 - Did the injured player come back in the game later or did he go to the dressing room for the remainder of the game
 - Do not state what you think is the extent of the injury, this is a doctor or trainers job
- When describing the incident use team names and not team colors as the person reading the report probably does not know the jersey colors of the teams.
- Report any other occurrence that may have happened as the penalized player was leaving the ice.
- Read your report over and see if you are able to picture the actual occurrence from what you have reported, as this report will end up with a league official that was probably not at the game and will have to visualize what happened by reading this report and then make a decision on suspensions.
- Sign the report and include your telephone number in the event a league official needs to contact you.
- Some leagues supply special write-up books for these reports that are left in the referee's room but if there is no report form available it should be written on the back of the original copy of the game sheet.
- Do not make any comment to a team official regarding the length of any suspension a player may receive. If you are asked, your answer should be, “it is up to the league to determine the length of any suspension”



NORTH CENTRAL REGION

REGIONAL OFFICIATING CAMP

Each spring aspiring officials are brought in from across our province in an effort to develop their officiating skills, while at the same time competing for the opportunity to represent their respective Region at Alberta Cup and, subsequently Development Camp.

While attending the participants officiate the U-16 Alberta Cup Regional Try-Out Camp. The camp typically runs during one weekend in late March, from Friday to Sunday.

The last several years a Central camp has been held in Blackfalds, AB with a camp also running in Edmonton and Calgary. Each time you are on the ice, you are given feedback to improve your skills, and showcase your talents to elite official supervisors. In addition, you will also complete a written exam to test and improve your rule knowledge as well as on ice testing. Once the games are completed the top ranked officials from the three camps are selected to the Alberta Cup and Development Camp.

Many of the officials who attend these camps are given opportunities to officiate in the “Senior Program,” and are potentially exposed to “AAA” hockey the following season. This is also our biggest opportunity to identify rural officials and speed up their development. This is the first step for elite officials and we strongly encourage all those that are eligible to apply. The earlier you apply the more we can supervise and work with you throughout the season to prepare you for the camp should you be selected.

To apply please email ncmaledevelopment@hockeyalberta.ca prior to January 15, 2020 stating that you would like to be considered for the regional camp, and include the following (You must be 18 years old by April 15th, 2020 and under the age of 28):



NORTH CENTRAL REGION

SUPERVISIONS

Another hockey season has arrived upon us. As you all may know, the Supervision Program is a vital program, which will help the development of our fellow officials in our zone. Over the past seasons, I have witnessed the supervision program improve many officials in our zone as well as many of the supervisors going out and performing the supervisions. With these supervisions, we will improve as a zone together.

In order for everyone to keep improving as an official, each senior program official in the zone must conduct **12** supervisions. The first **9 supervisions** must be submitted to me by **December 18** to get on the **January schedule** and the remaining **3 supervisions** submitted to me by **January 15** to be eligible for **playoffs**. Supervisions may be conducted on any level of hockey but would like to see us try and keep our focus on developing Level 1's and 2's as well as inexperienced Level 3's. With that being said, I would like to see **9 of the 12** supervisions done on Level 1 and 2 officials.

The only way supervisions will be accepted is through the online web form, which can be found on the Hockey Alberta Officials website at

<https://officials.hockeyalberta.ca/officials-regions/north-central-region/supervision-form-north-central/>

Please feel free to contact me if you have any questions, concerns and even some new ideas about the supervisions and the supervision program. Remember that these supervisions are very beneficial to the new and younger officials that we are trying to develop and set up for success.

Please contact me at:

Supervision Coordinator

David Westwood

Cell: 403-872-4348

Email: ncsupervisions@hockeyalberta.ca

Thank you for your cooperation. I hope to see you on the ice and have a great season!!

APPLICATION FOR LEVEL UPGRADE

If you are interested in applying for a level upgrade (Level 3 or 4), the following information needs to be sent via email to ncsupervisions@hockeyalberta.ca

Name

Phone Number

City/Town

Current Level

Levels Officiated (Referee and Linesman)

Local Referee Assignor

Applications must be sent in **no later than November 30, 2019**



NORTH CENTRAL REGION

NORTH CENTRAL REGION CHANGE ROOM GUIDELINES

Below are the recommended guidelines for North Central Region officials when sharing a change room with the opposite sex or with officials under the age of 18.

- Always lock the door behind you. If the door is locked there is no chance that someone may accidentally walk in while someone is changing.
- Take turns leaving the room to allow others to change. Even if there is a separate bathroom stall this is still recommended.
- No nudity while members of the opposite sex are present.
- Respect the wishes of others.
 - Discuss who will shower first. Respect officials who need to leave in timely manner if they have commitments after the game.
- If there is no door to the shower area officials should take turns leaving the room while others shower.
- If you are sharing the room with another crew with members of the opposite gender please respect their time and don't make them wait for you to go out to the ice so they can they change.
- These guidelines also apply for situations where adults and persons under the age of 18 are sharing a change room.

The guidelines are to be used in conjunction with the Hockey Canada Change Room policy.



NORTH CENTRAL REGION

HOCKEY CANADA INSURANCE PROGRAM

Information contained reflects a very broad overview of coverage

When are you insured?

During **SANCTIONED** Hockey Canada games, tournaments and camps. Includes on and off ice as well as transportation **DIRECTLY** to and from the arena/facility. Also covered while billeted or in accommodations at a Hockey Canada/ Branch event or tournament.

What does your insurance include?

Commercial General Liability: This policy covers Hockey Canada members who have paid a premium for their on and off ice activities while participating in Hockey Canada sanctioned Hockey events. Covers up to \$20,000,000 of coverage for a single liability occurrence, as dictated by the terms of and conditions of the policy.

Accidental Medical Insurance: This insurance augments Provincial, Medical and Hospital plans and covers members against accidents which occur during participation in Hockey Canada/Branch sanctioned activities to the limits specified in the policy.

Accidental Dental Insurance: See "Accidental Medical" above. In addition, when accidental injury to whole or sound teeth shall, within 30 days, require treatment, the plan will pay for reasonable expenses that incurred within 52 weeks after the date of the accident. The current standard coverage covers up to \$2,500 maximum. However, starting this season, officials get an additional \$5,000, which increases coverage up to \$7,500.

Accidental Death and Dismemberment Insurance: Covers death and very serious injuries incurred by a member while participating in a sanctioned event or while travelling directly to and from the arena or venue. This coverage is in addition to any other valid and collectible insurance policy.

Loss of Income Benefit: If an accident results in the covered member incurring a loss of earnings in excess of 30 consecutive days, Hockey Canada shall provide reimbursement for those earnings lost for the next 30-day period. This is based on a \$250 per week/\$1000 maximum per claim limit. This benefit is not intended to reimburse for missed officiating assignments.

How to make a Claim

- i. **Secure** a Hockey Canada Injury Report Form from the Hockey Alberta website (<https://www.hockeyalberta.ca/members/insurance/insurance-forms/>)
- ii. **Complete** the form in its entirety. Have your team official complete the team section and your Doctor/Dentist complete the back of the form.
- iii. **Submit** the fully completed form to the Hockey Alberta office along with any receipts or invoices within 90 days of the date of accident.
 - Only Accident Report Forms received in the Branch office within 90 days of the date of accident will be accepted.
 - Forms must be completed in their entirety or the forms will be returned.
 - Only original receipts and/or invoices are acceptable.
 - Hockey Canada is strictly a supplemental insurer. If you have access to any other insurance, you must pursue it through them first. Hockey Canada shall cover those costs not covered by your primary insurance to our policy limits.

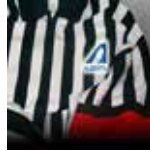
TO VIEW THE **COMPLETE** INSURANCE DOCUMENT GO TO:
(<https://www.hockeyalberta.ca/members/insurance/insurance-forms/>)
and download: "Safety Requires Teamwork"



NORTH CENTRAL REGION

NORTH CENTRAL WEBSITE & SOCIAL MEDIA

GET ALL THE LATEST UPDATES AND STAY CONNECTED



WEBSITE

Our website is moving! Check us out at
<https://officials.hockeyalberta.ca/officials-regions/north-central-region/>



FACEBOOK

Like “North Central Zone Referees Committee” page



Follow “@NCZRC”



Instagram

Follow “@northcentralreferees”