



Specific Procedures

PART 1

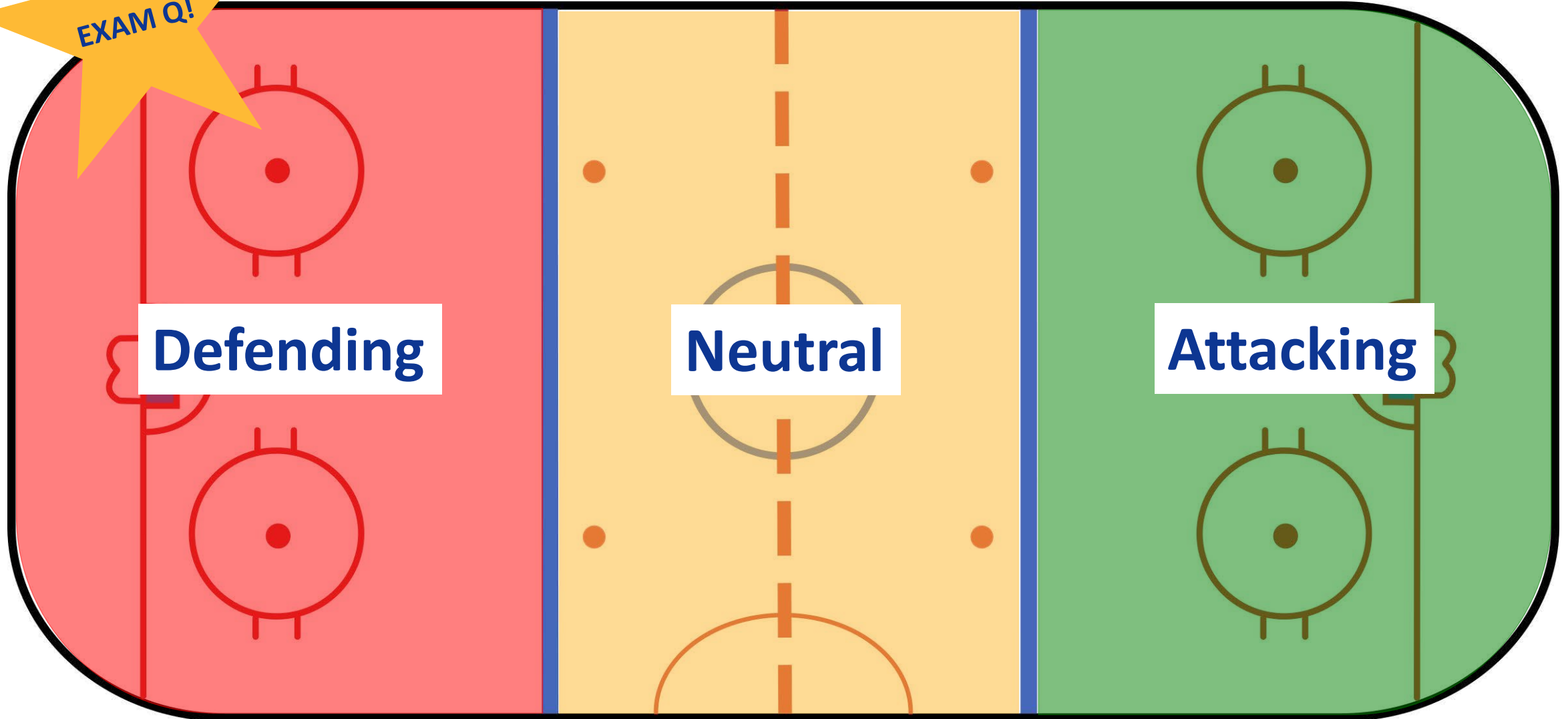


Junior Clinic
Module E

Zones of the Ice



EXAM Q!



Defending

Neutral

Attacking

The background features a large white circle with a blue border, centered on a blue and yellow geometric pattern. The blue pattern consists of diagonal stripes and shapes, while the yellow pattern is a solid triangular shape on the right side.

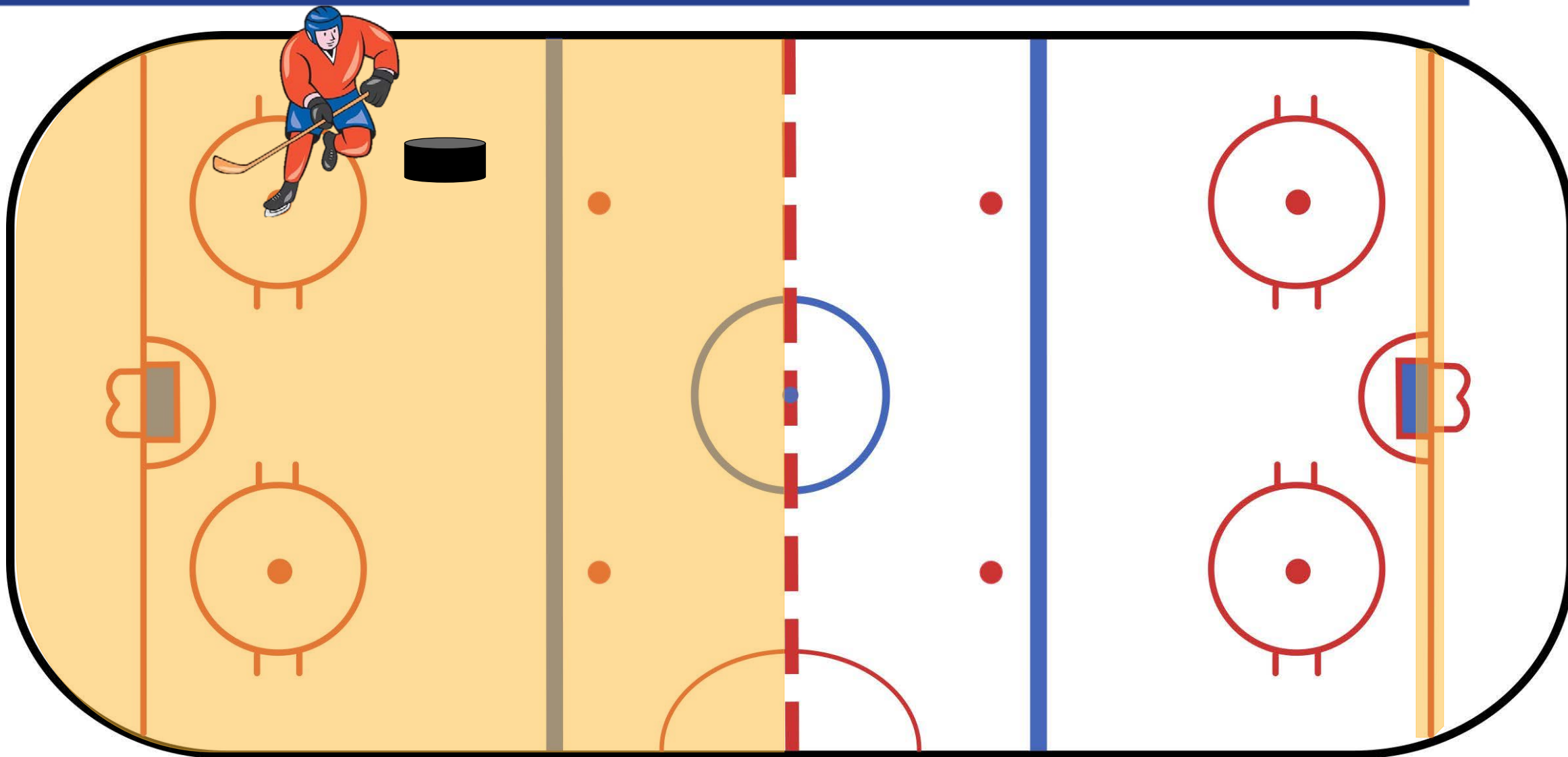
Icing the Puck

Rule 10.5 Icing the Puck



- Team shoots the puck from their half of the ice – behind the center red line which divides the ice in halves
- Their team is equal in strength or more than the opposing team
- The puck crosses the opposing team's goal line:
 - without being touched by an opposing player
 - without being touched by their own team on the opposing team's half of the ice

Situation #1



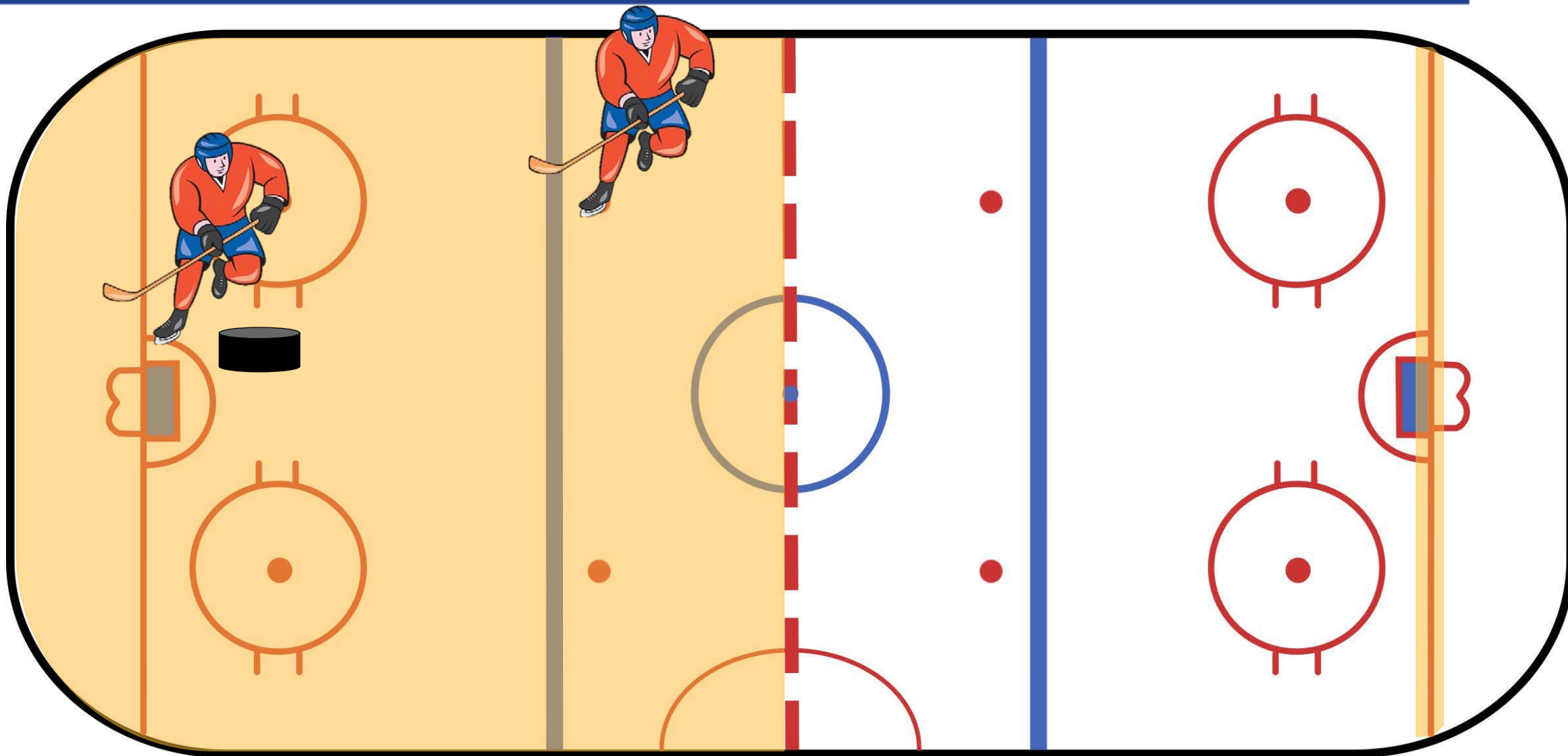


Is it icing?
Why/why not?

YES!



Situation #2



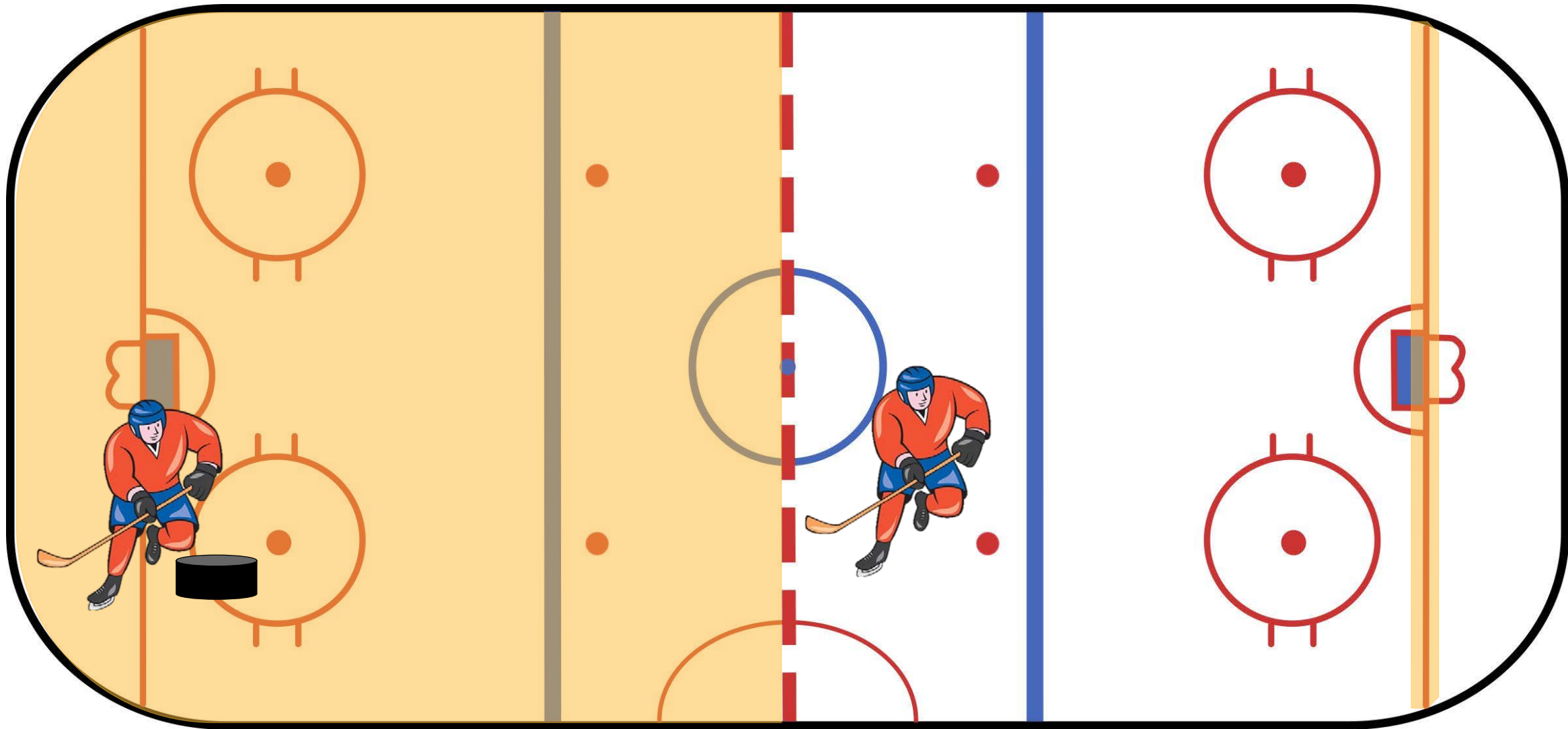


Is it icing?
Why/why not?

YES!



Situation #3



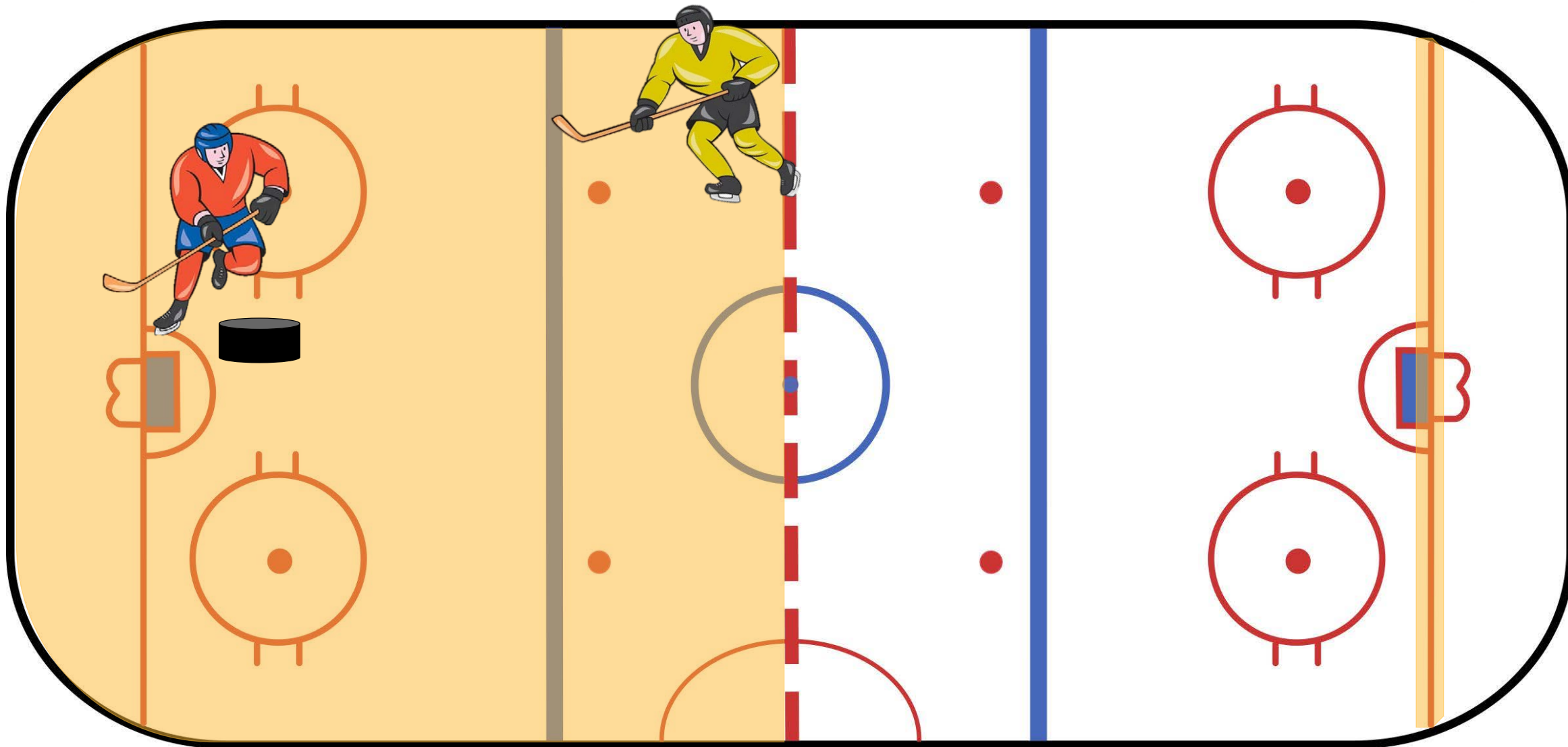


Is it icing?
Why/why not?

NO!



Situation #4



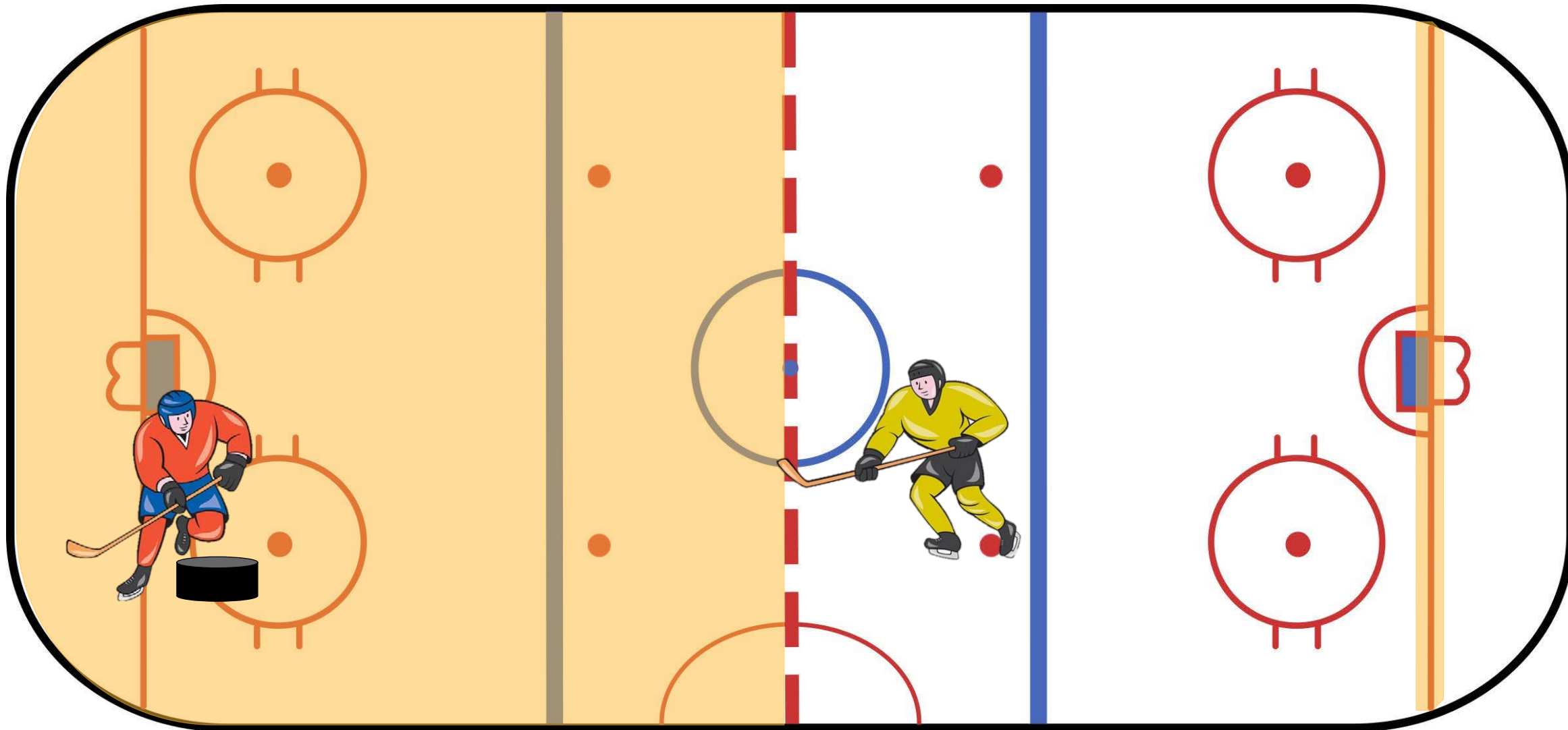


Is it icing?
Why/why not?

NO!



Situation #5



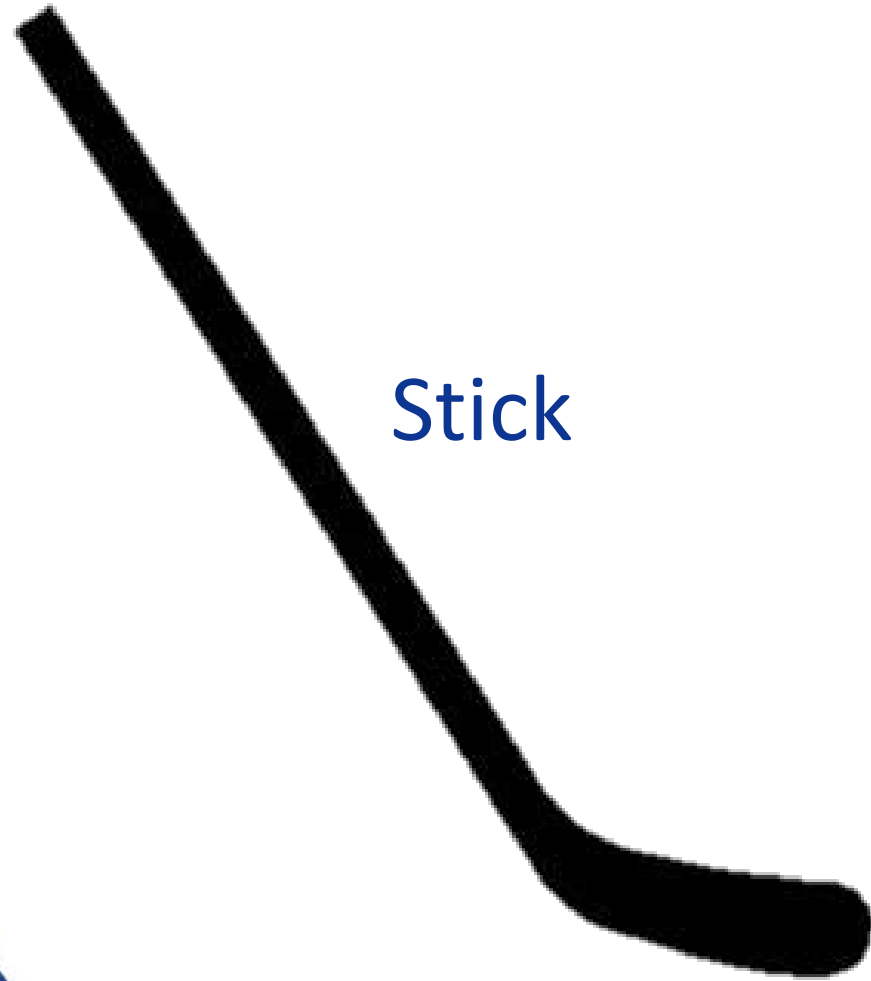


Is it icing?
Why/why not?

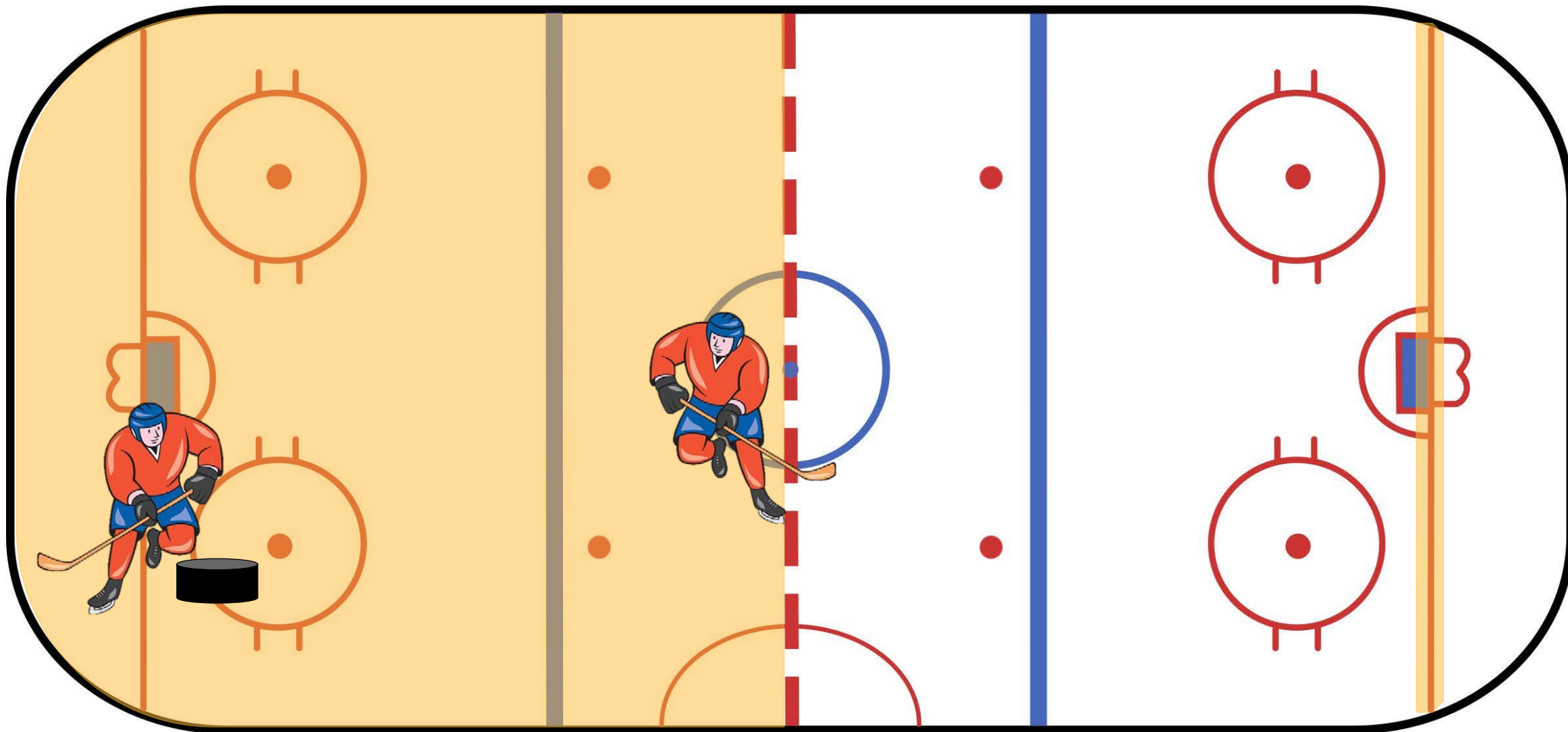
NO!



What determines an icing – the position of the player's skates or their stick?



Situation #6



Is it icing?
Why/why not?

EXAM Q!

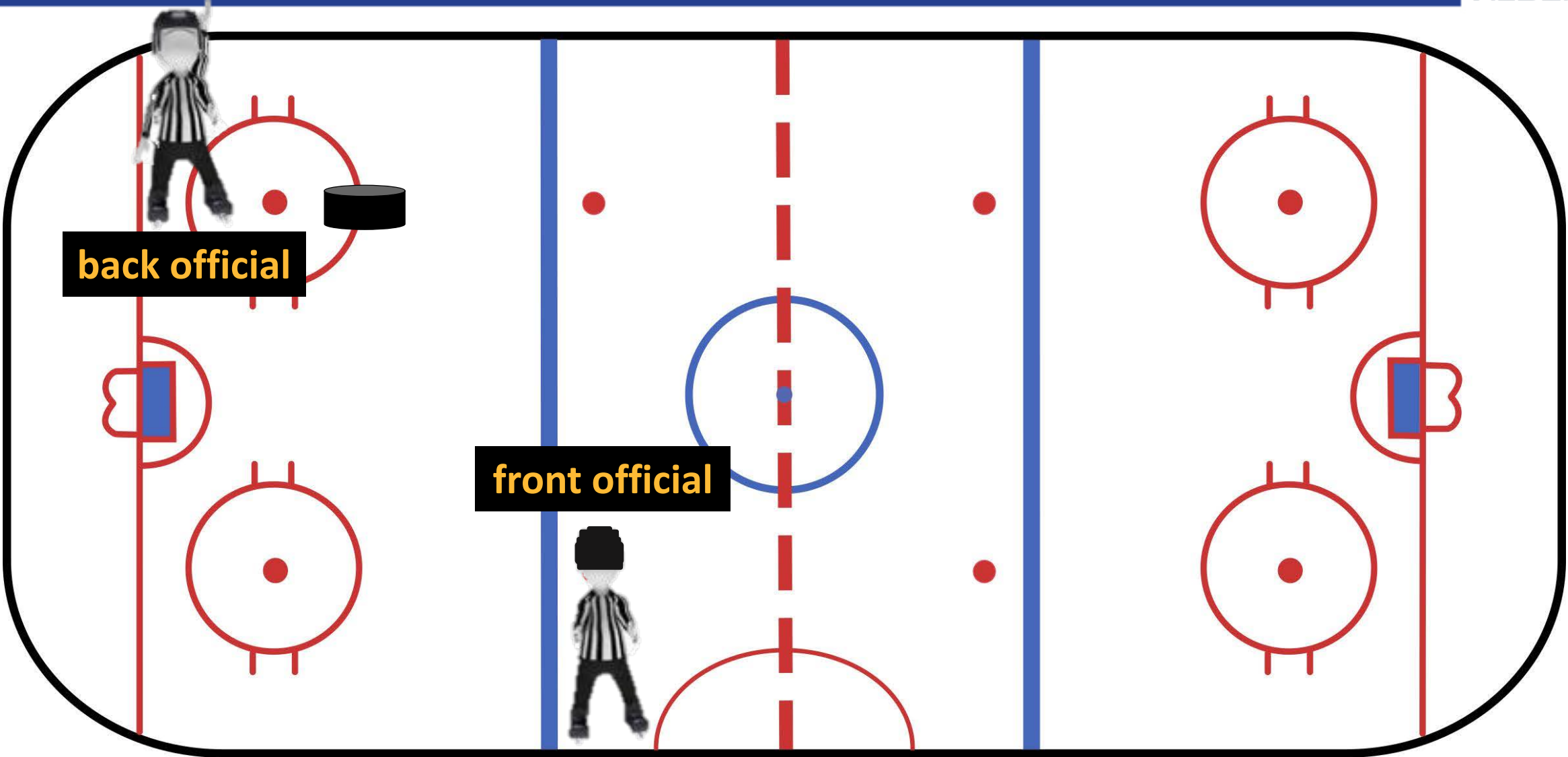
NO!





**Icing
Procedure:
2-Official
System**

Icing Procedure



back official

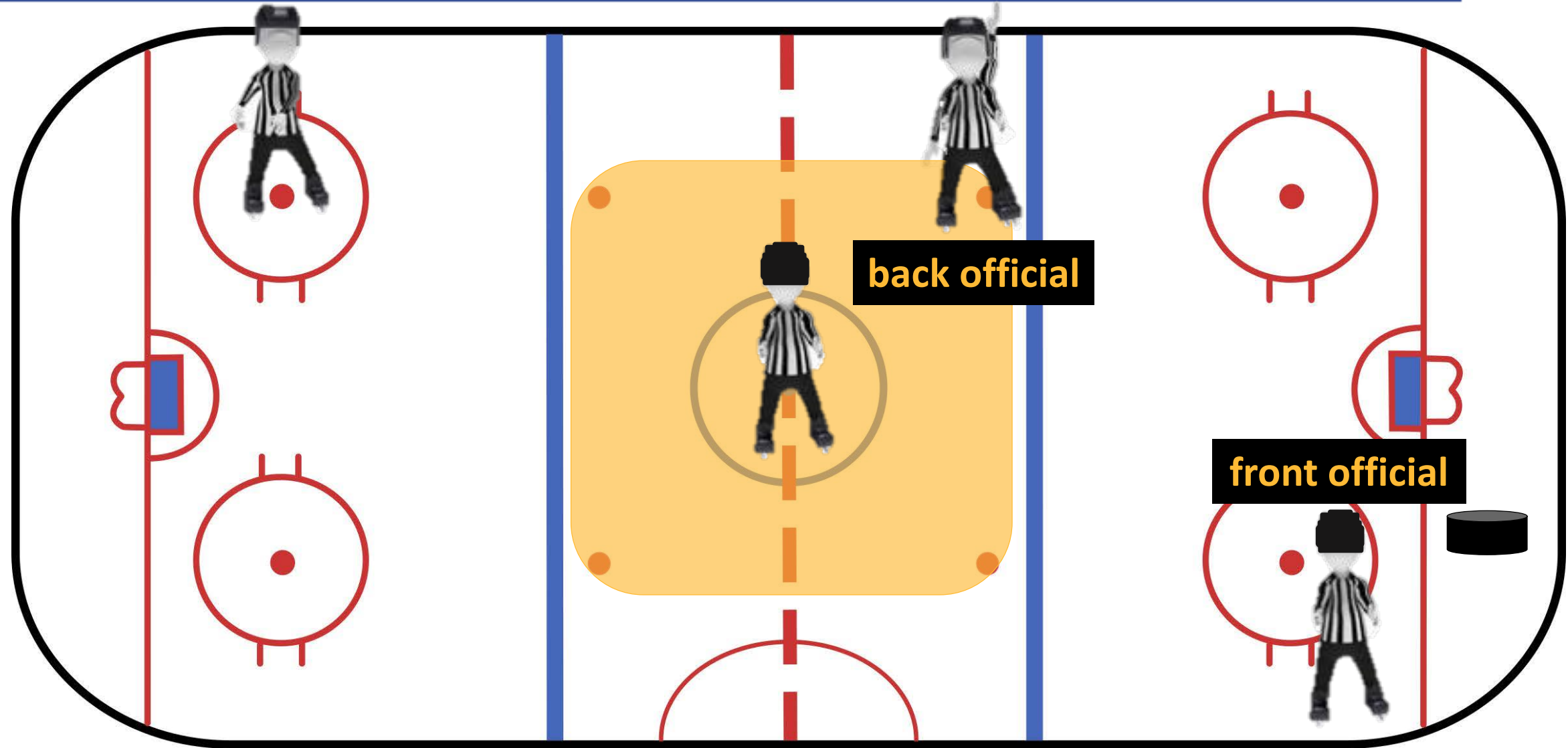
front official

What just happened?



1. Puck was shot down the ice
1. The back official raises their non-armband arm and yells “**ICE!**” to communicate a potential icing to their partner
1. Both officials skate as the puck goes down the ice
1. The front official blows their whistle once the puck has crossed the opposing team’s goal line

Dropping the Puck After an Icing



What just happened?



1. Front official retrieve the puck and takes it to the face-off dot
1. Back official does line change procedure before going to their face-off position

What if...?



The opposing team touches the puck before it crosses the goal line?

Use your washout signal and yell “NO!”

What if...?



A player from the team that has iced the puck touches it on the opposing team's half of the ice?

Use your washout signal and yell “NO!”

What if...?



A player from the team that has iced the puck touches it on their own team's half of the ice?

Continue to call the icing!



Use visual signals as well as loud verbal cues in order to communicate with your partner effectively.

Communication



**When a Goal
is Scored:
2-Official
System**

When a Goal is Scored



The front official (in the end zone) will:

1. Blow their whistle and signal the goal
1. Report it to the timekeeper
1. Take their position for the face-off

When a Goal is Scored



The back official (at the blue line) will:

1. Retrieve the puck from the net
1. Go to center ice to drop the puck for the ensuing face-off
1. Conduct the line change procedure

When a Goal is Scored



Positioning and procedures are now the same as for the start of the game.

When a Goal is Scored

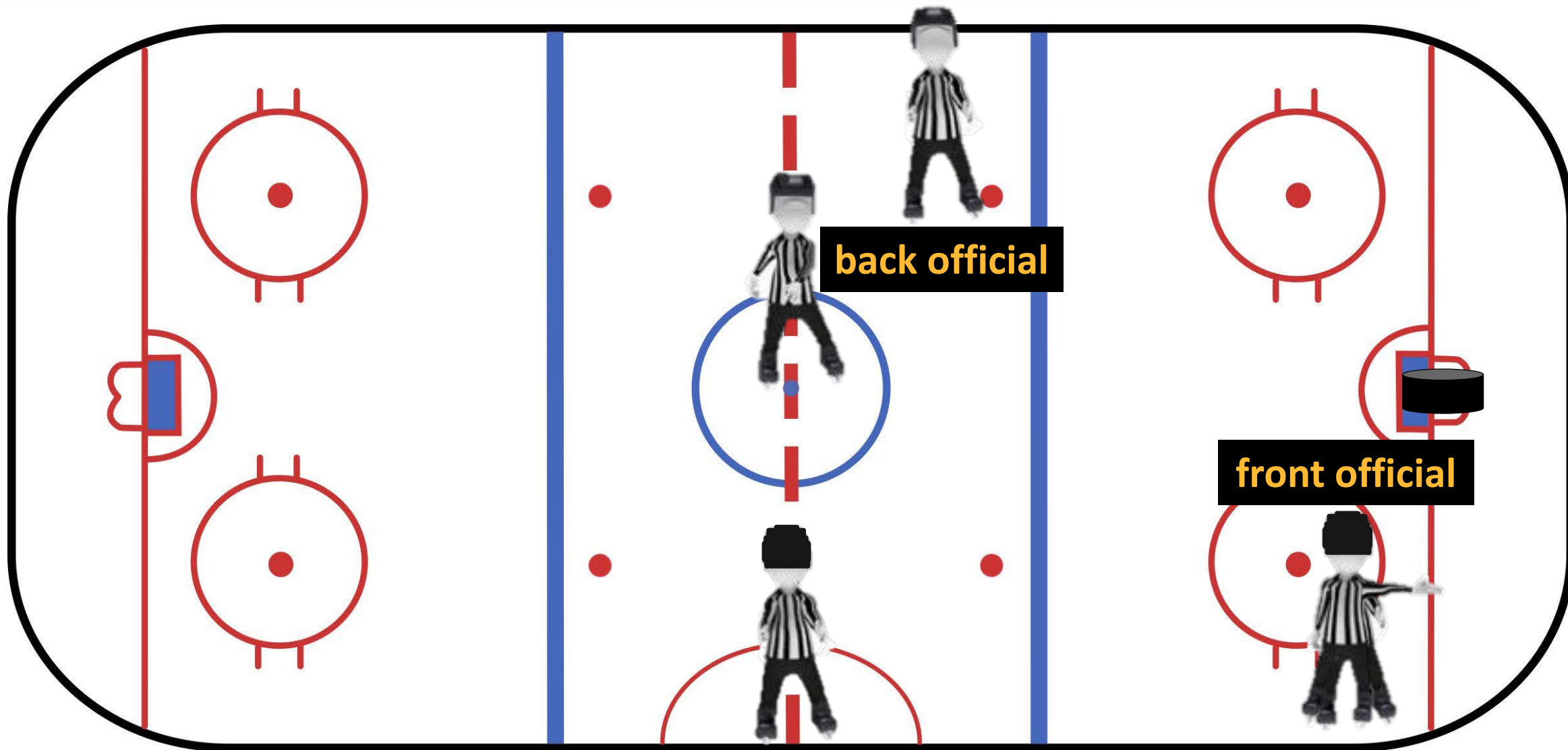


Image Credits



- <https://www.dreamstime.com/stock-illustration-officials-signals-hand-different-illustrated-image42948831> (ref)
- <https://creativemarket.com/patrimonio/162227-Ice-Hockey-Player-With-Stick-Cartoon> (red player)
- <https://creativemarket.com/patrimonio/172680-Ice-Hockey-Player-In-Action-Cartoon> (yellow player)
- <https://www.iconspng.com/image/29296/hockey-rink> (rink)
- <http://getdrawings.com/hockey-stick-silhouette> (stick)